

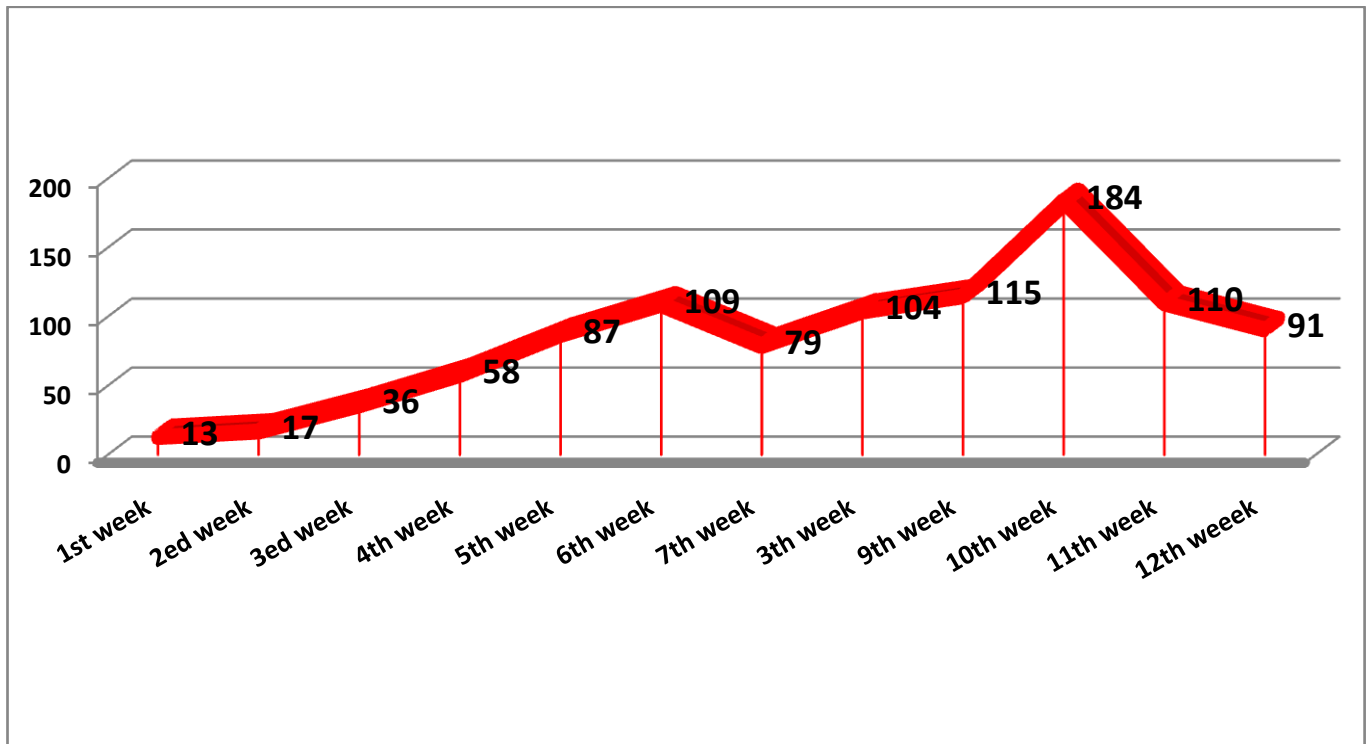


**Report for violent and terrorist incident
during the first quarter of 2015**

Introduction

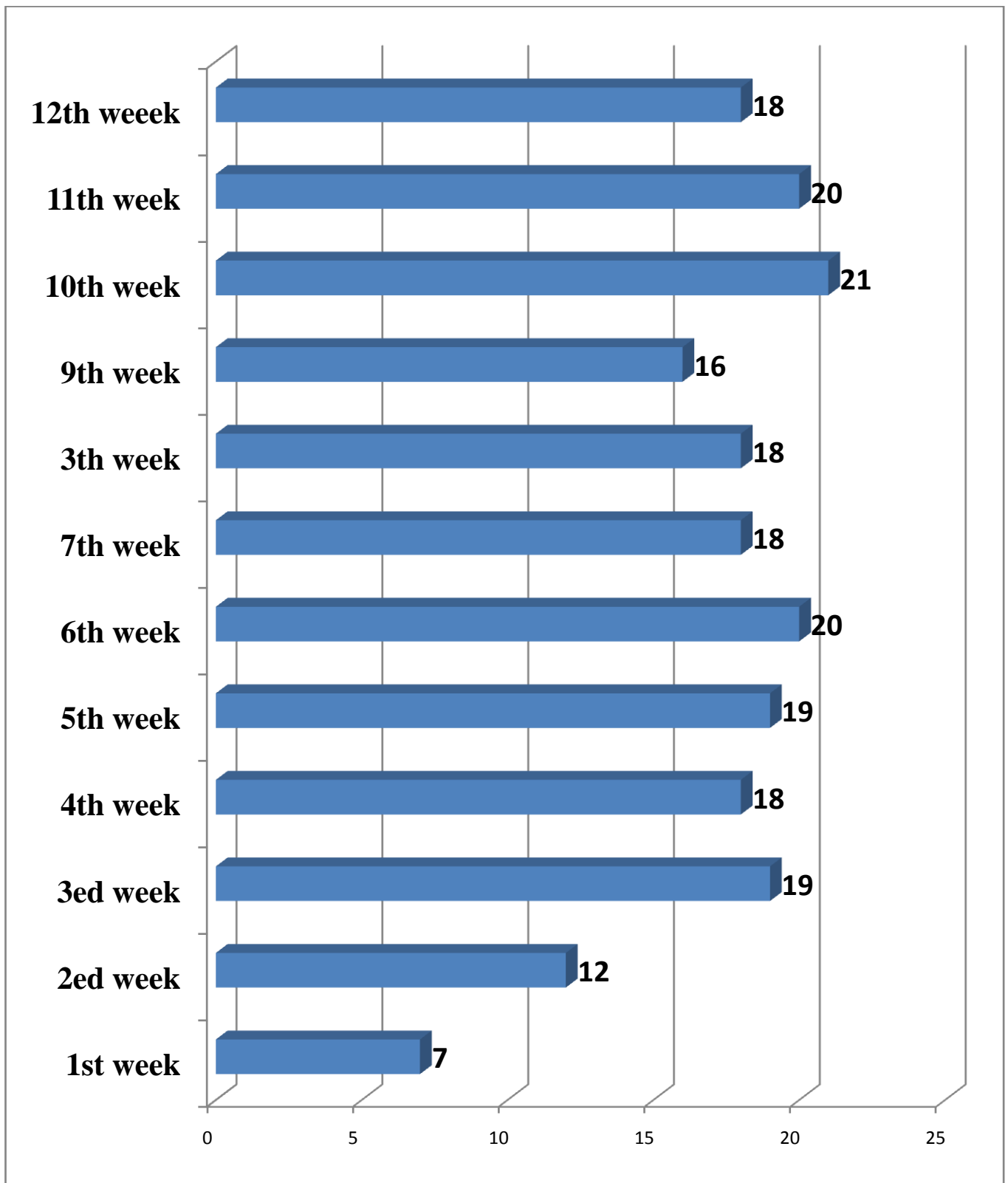
During the period from 1st January to the end of March 2015, the Parliamentary Elections Observatory affiliated to the Local –International Joint Mission- Egypt 2015, observed and followed up all the terrorist incidents of bombing attempts and attacks committed by the opponent powers for the post 30 June at 2013 path, the Mission also issued 13 weekly report during this period, these reports addressed these incidents' developments and its indications related to the electoral process, in this report the Observatory presenting compilation and quantitative analysis of what was monitored during all this period.

1- Terrorist crimes development by chronology



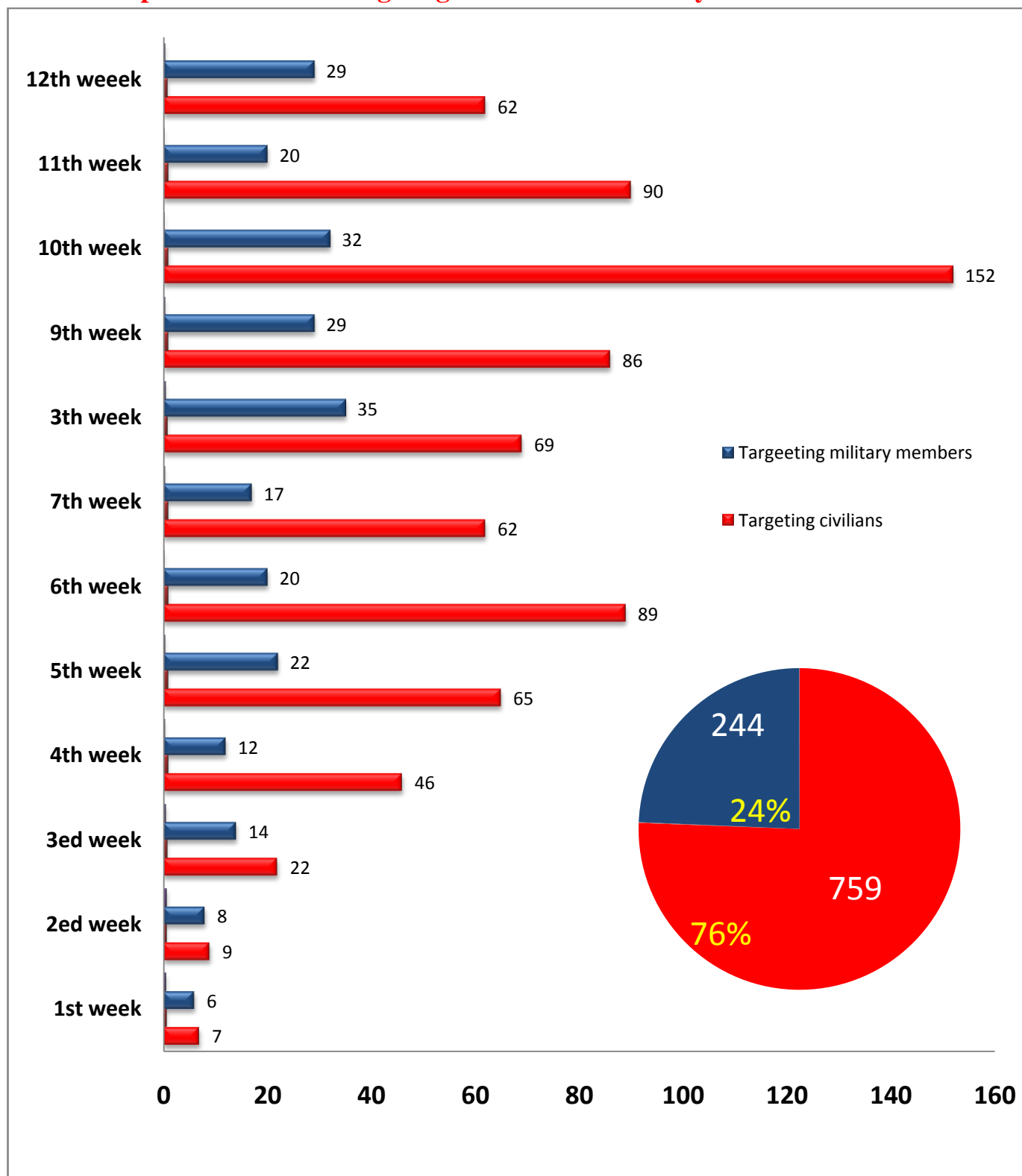
- During the first quarter of 2015, Egypt have witnessed 1003 terrorist crime.
- The results in the previous table indicating that the 9th week from 6th to 12th March witnessed the largest rate of the terrorist incidents by (18%), it was the week right before holding the Economic conference in Sharm El Sheikh, also the weeks witnessed opening the candidacy door for parliamentary elections, holding the economic conference, close the candidacy door for the parliamentary elections, conclusion of the preparations for the Arab summit, the weeks witnessed these events also witnessed a high rate of violent and terrorist incidents by (11% from the total terrorist incidents).

2- violence incidents by governorates:



The results in the previous table indicating that the concurrent weeks with holding the Economic conference and opening the candidacy door were witnessed the maximum geographical spread of the violent and terrorist incidents(20 -21 governorate).

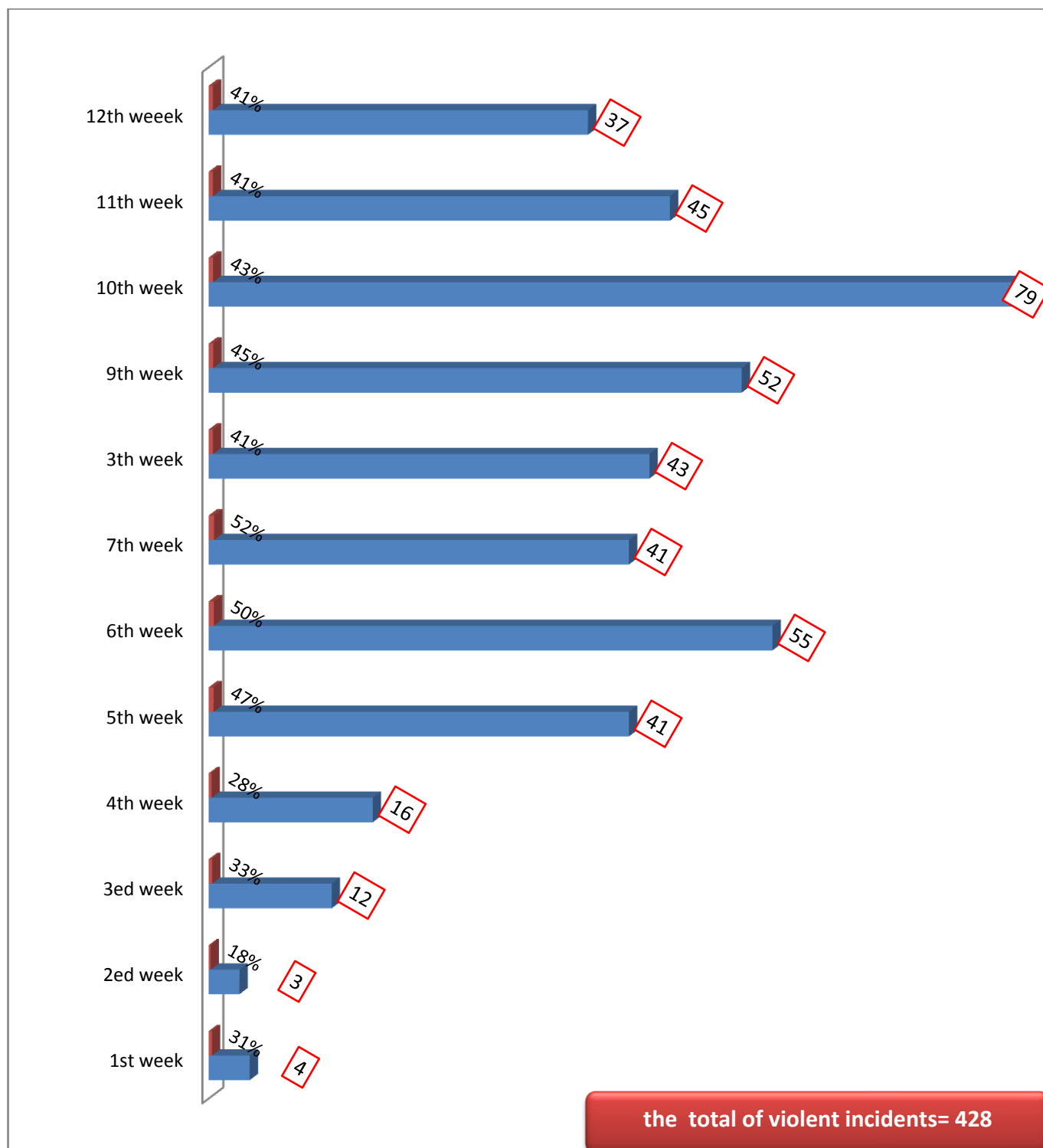
3- Comparison between targeting civilians and military members.



The results in the previous table indicating that the most of the terrorist crimes targeted civilians and civilian facilities, by 76% for 24% or targeting police and military targets, the maximum rate of targeting civil targets(citizens – facilities – non military facilities) in the concurrent weeks with holding the Economic conference and opening the candidacy door,(82%- 83%).

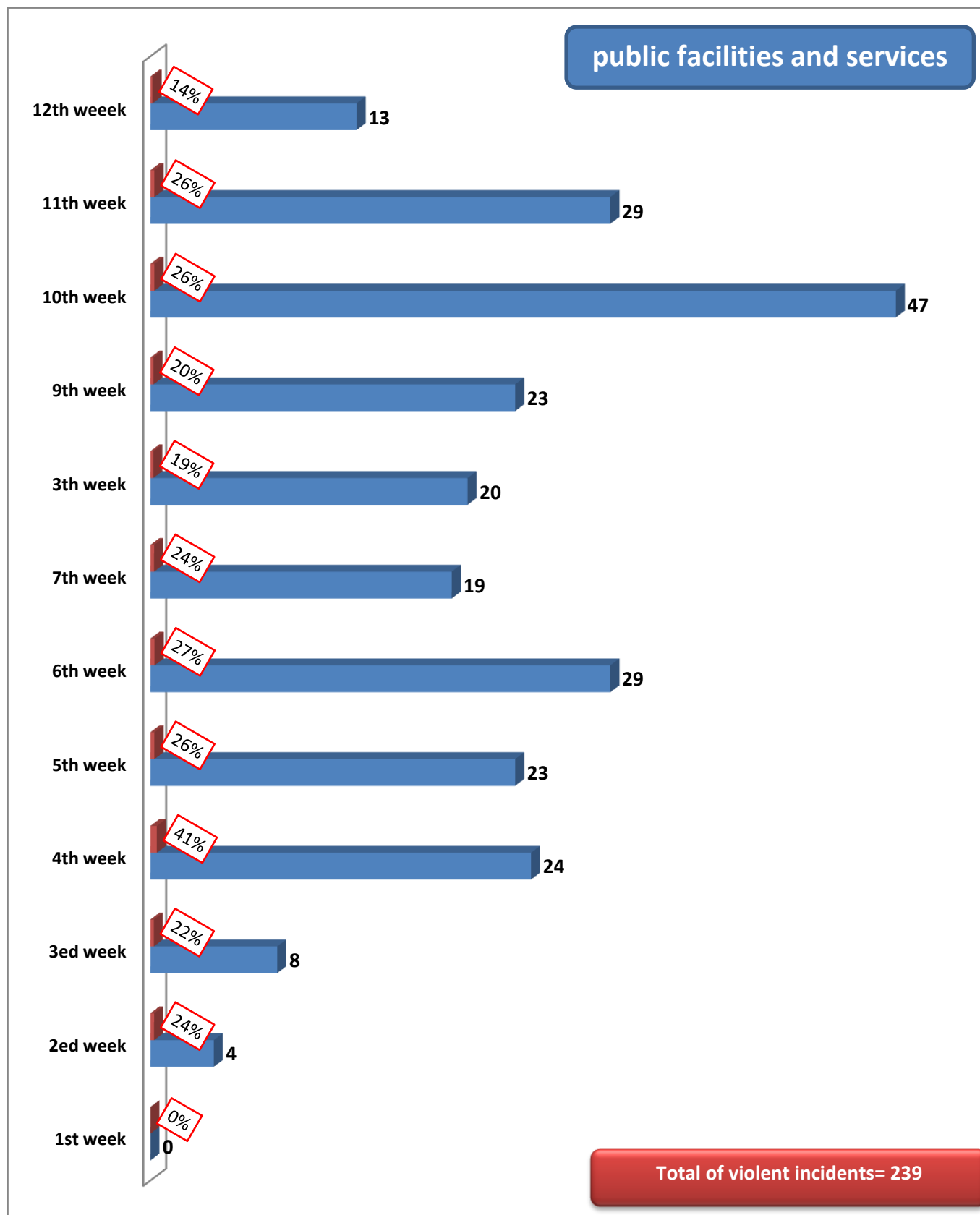
4- The terrorist elements' targets

1. Targeting citizens



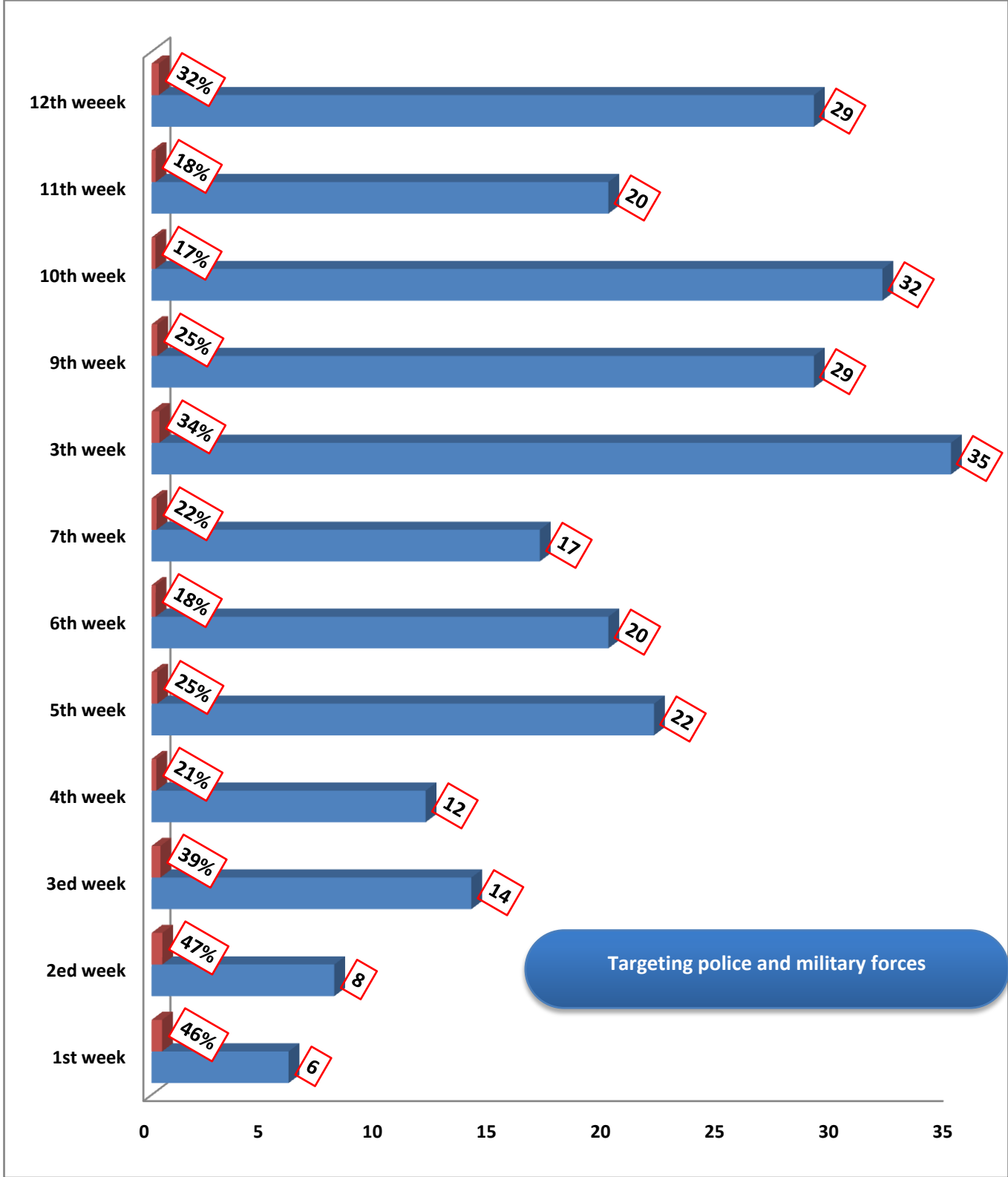
The results in the previous table indicating that the concurrent weeks with opening the candidacy door for the parliamentary elections have witnessed the maximum rate of targeting citizens by the terrorist groups by (50-52%).

2. Public facilities and services



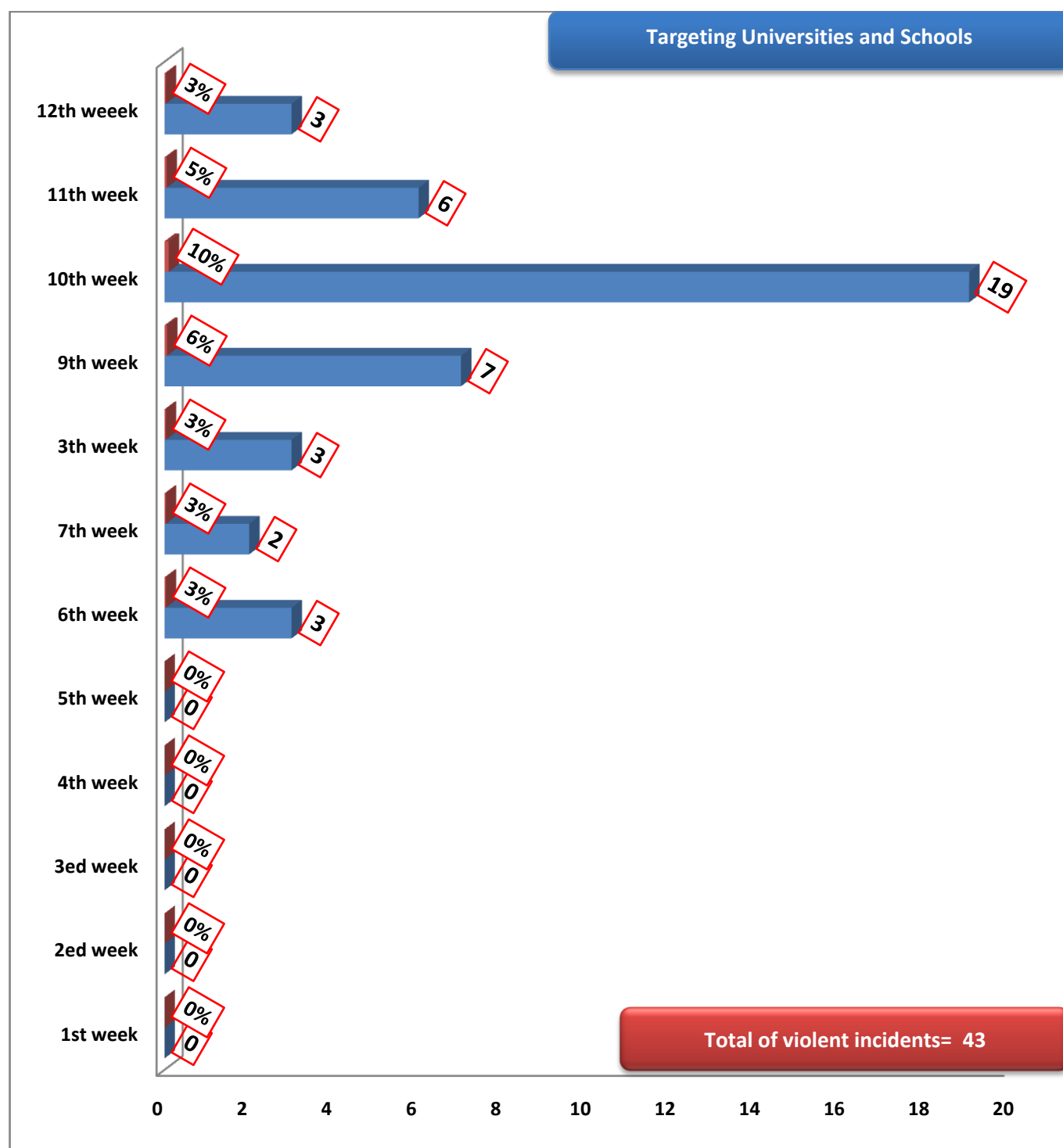
The results in the previous table indicating that the concurrent week with the memory of the 25th January 2011 revolution, witnessed the highest rate of targeting public facilities and services (41%).

Targeting police and military forces



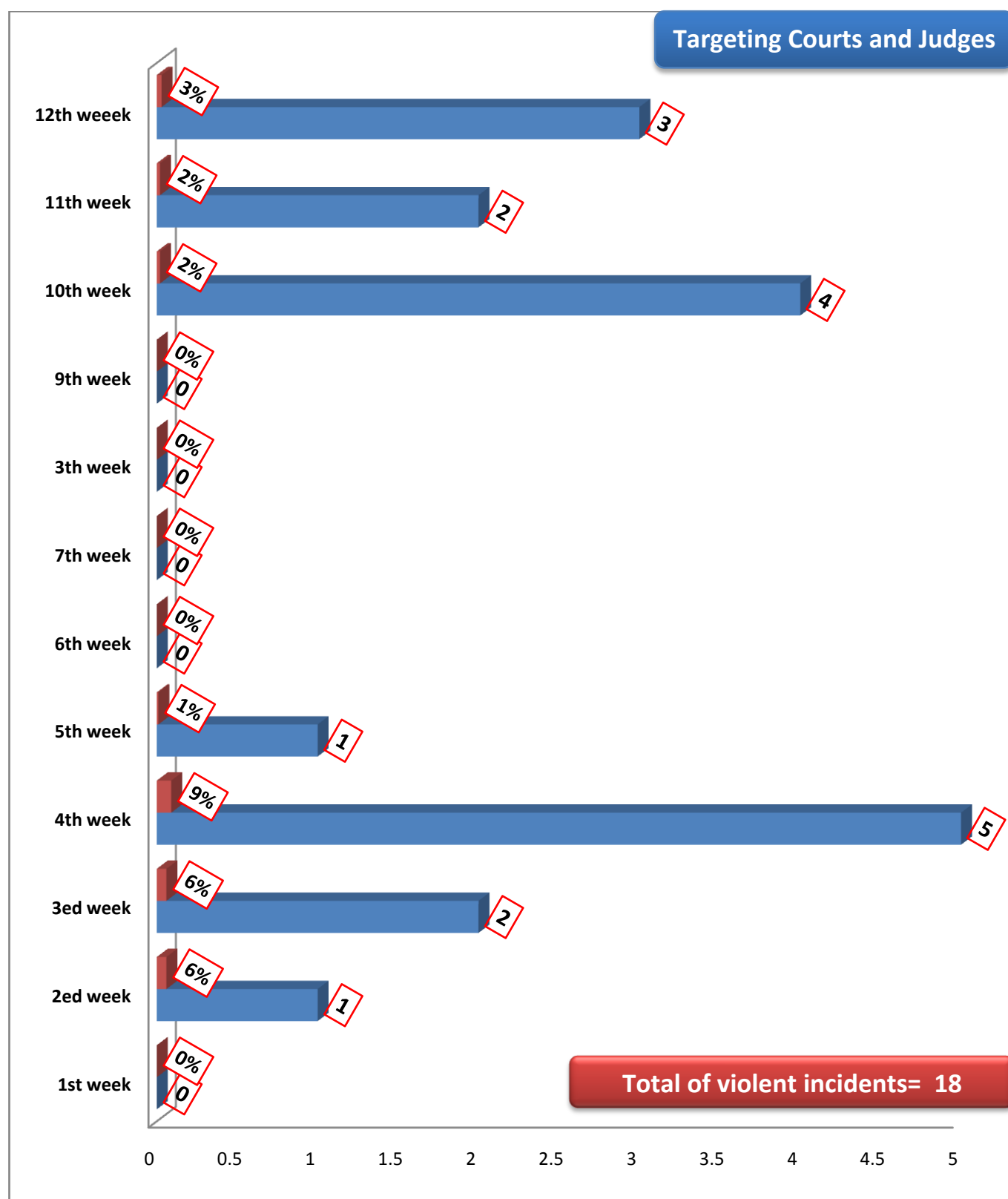
The results in the previous table indicating that first and second weeks witnessed the highest rate of targeting police and military forces by (46-47%) from the all incidents.

3. Targeting Universities and Schools



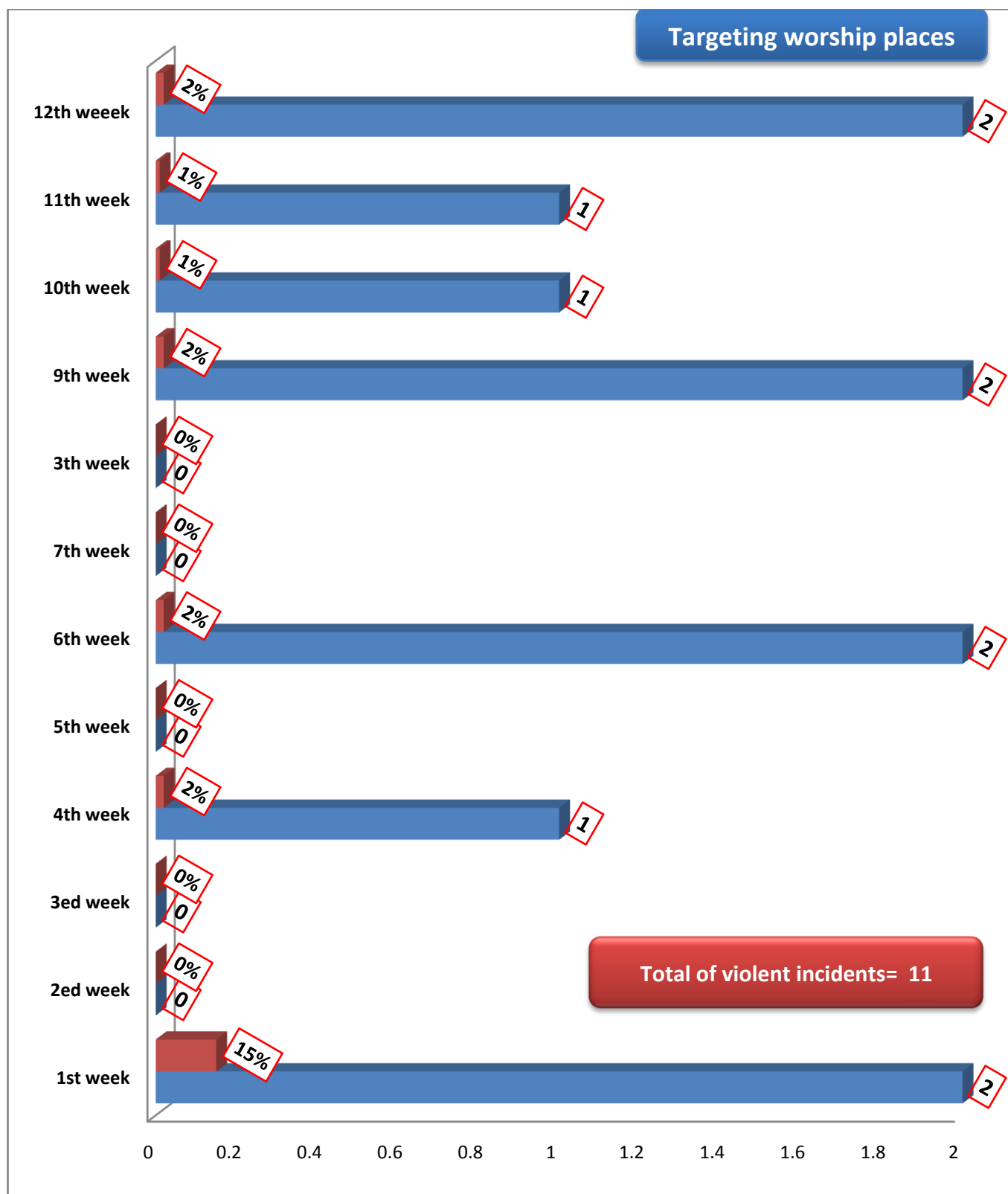
- The results in the previous table indicating that the 10th week the concurrent with conclusion preparation to hold the Economic conference witnessed the highest rate of targeting Universities and Schools (10% from the Total incidents).

5.Targeting Courts and Judges



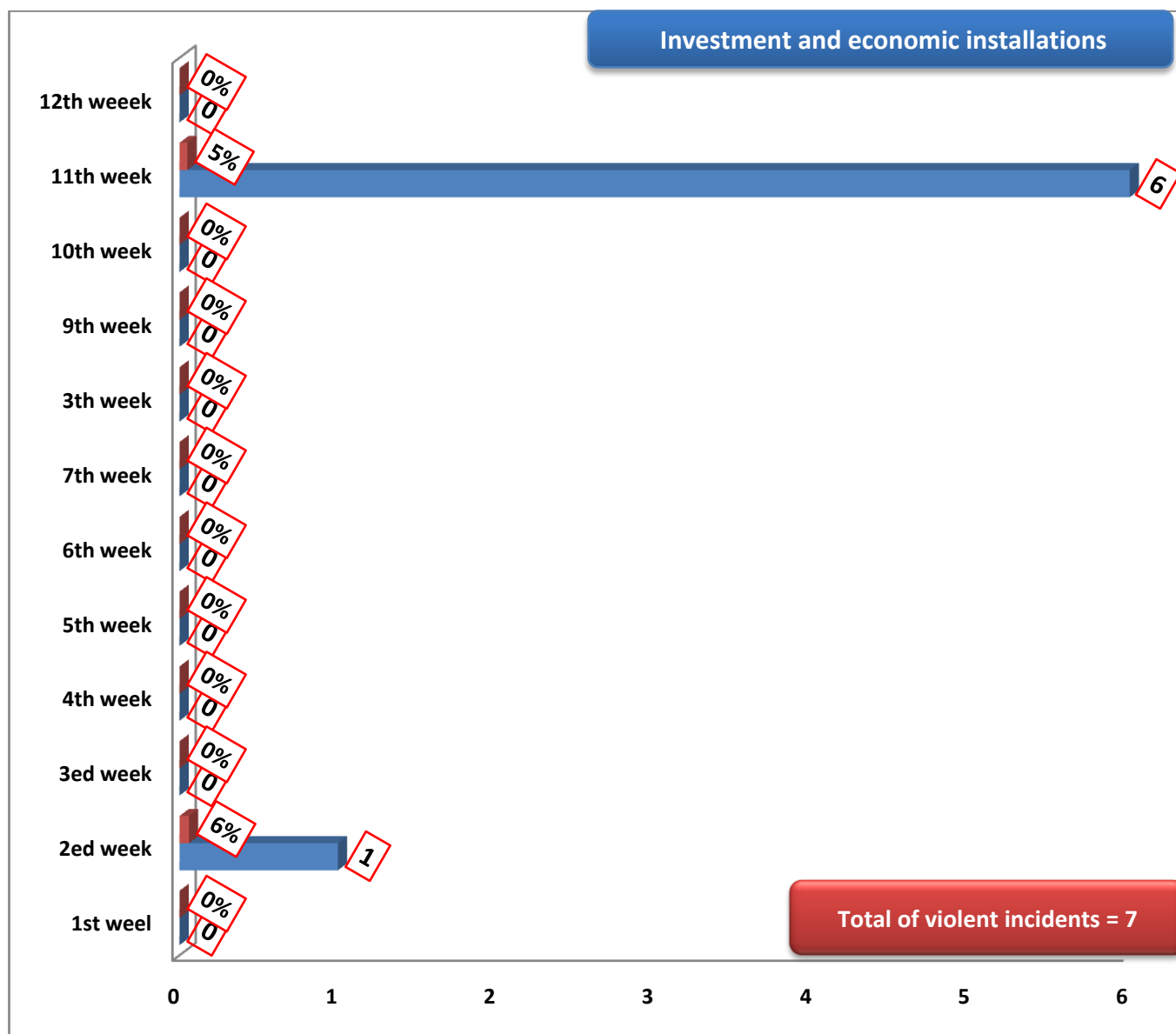
The results in the previous table indicating that the concurrent week with the memory of the 25th January 2011 revolution, witnessed the highest rate of targeting Courts and Judges by (9% from all the violent incidents in the same week).

6.Targeting worship places.



The results in the previous table indicating that the 1st week the concurrent with Christmas witnessed the highest rate of targeting worship places (15% from all the violent incidents in the same week).

7. Targeting Investment and economic installations



The results in the previous table indicating that the 2^{ed} week of the year (8-15 January) and the 11th week the concurrent with Economic conference have witnessed the highest rate of targeting Investment and economic installations with rates between 5-6% from all the violent incidents in the same weeks.